

# Green News

July 2018



Contact us today to place your order!

## Trade List

DESCRIPTION	GRADE	PRICE
Acaena purpurea	1L	\$5.50
Agapanthus Streamline (blue)	1L	\$5.50
Agathis australis	1L	\$5.95
Ajuga Jungle Beauty	2L	\$6.95
Alectryon excelsa	1L	\$7.50
Anemanthele lessoniana	1L	\$3.95
Apodasmia similis (Leptocarpus similis)	0.5L	\$2.10
Apodasmia similis (Leptocarpus similis)	1L	\$3.15
Arthropodium cirratum	1L	\$4.50
Arthropodium cirratum	2L	\$5.85
Arthropodium Matapouri Bay	1L	\$4.50
Astelia fragrans	1L	\$7.95
Baumea/ Machaerina articulata	0.5L	\$2.50
Baumea/ Machaerina articulata	1L	\$3.50
Baumea/ Machaerina rubiginosa	0.5L	\$2.95
Baumea/ Machaerina rubiginosa	1L	\$3.50
Baumea/ Machaerina teretifolia	0.5L	\$2.50
Beilschmeidia taraire	1L	\$4.85
Blechnum novae-zealandiae	1L	\$9.50
Blechnum novae-zealandiae	2L	\$9.50
Blechnum penna maria	2L	\$9.50
Bolboschoenus fluviatilis	0.5L	\$2.95
Buxus Green Gem	2L	\$6.95
Buxus sempervirens	2L	\$6.95
Carex buchananii	1L	\$4.50
Carex comans bronze	1L	\$4.50
Carex comans bronze	1.5L	\$4.50
Carex dipsacea	0.5L	\$2.10
Carex dissita	0.5L	\$2.10
Carex dissita	1L	\$3.15
Carex flagellifera Green	1L	\$3.95
Carex geminata	0.5L	\$2.10
Carex geminata	1L	\$4.50
Carex lessoniana	0.5L	\$2.10
Carex maorica	0.5L	\$2.10
Carex secta	0.5L	\$2.10
Carex secta	1L	\$3.95

DESCRIPTION	GRADE	PRICE
Carex secta	1.5L	\$4.50
Carex solandri	1L	\$3.15
Carex testacea	0.5L	\$2.95
Carex virgata	0.5L	\$2.10
Carex virgata	1L	\$3.15
Carpodetus serratus	1L	\$4.50
Choisya ternata	2L	\$6.95
Clivia miniata	2L	\$9.50
Coprosma grandiflora	0.5L	\$2.95
Coprosma grandiflora	1L	\$4.50
Coprosma hawera	1L	\$4.50
Coprosma hawera	2L	\$6.50
Coprosma kirkii	1L	\$4.50
Coprosma kirkii	2L	\$6.50
Coprosma macrocarpa	0.5L	\$2.10
Coprosma macrocarpa	1L	\$3.15
Coprosma Middlemore	2L	\$6.95
Coprosma Poor Knights	1L	\$4.50
Coprosma Poor Knights	2L	\$6.50
Coprosma propinqua	1L	\$4.50
Coprosma prostrata	1L	\$4.50
Coprosma Red Rocks	1L	\$4.50
Coprosma Red Rocks	2L	\$6.50
Coprosma repens	1L	\$3.95
Coprosma rhamnoides	1L	\$4.50
Coprosma robusta	50C	\$1.50
Coprosma robusta	0.5L	\$2.10
Coprosma robusta	1L	\$3.15
Coprosma rugosa	1L	\$3.95
Coprosma taiko	1L	\$4.50
Cordyline australis	0.5L	\$2.10
Cordyline australis	1L	\$3.15
Cordyline australis	1.5L	\$3.95
Cordyline australis	10L	\$22.50
Corokia Bronze King	1.5L	\$4.50
Corokia cotonester	1L	\$4.95

Contact us today to place your order!

## Trade List

DESCRIPTION	GRADE	PRICE
Corokia Geentys Green	2L	\$6.95
Cortaderia fulvida/Austroderia	1L	\$3.15
Cortaderia richardii/Austroderia	0.5L	\$2.10
Cortaderia richardii/Austroderia	1L	\$3.15
Cortaderia splendens/Austroderia	1L	\$3.15
Cortaderia toetoe/Austroderia	0.5L	\$2.10
Corynocarpus laevigatus	1L	\$4.85
Cyperus ustulatus	0.5L	\$2.10
Cyperus ustulatus	1L	\$3.15
Dacrycarpus dacrydioides	1L	\$7.50
Dianella Breeze	1L	\$7.95
Dianella nigra	1L	\$4.25
Dianella Revelation	1L	\$7.95
Dietes bicolor	1L	\$4.50
Dietes grandiflora	1L	\$4.50
Dietes grandiflora	2L	\$6.50
Dietes irioides	1L	\$4.50
Dodonea purpurea	1L	\$3.15
Dodonea viscosa	1L	\$3.15
Doodia australis	1L	\$7.95
Doodia australis	2L	\$9.50
Dysoxylum spectabile	1L	\$4.85
Eleocharis acuta	0.5L	\$2.95
Eleocharis acuta	1L	\$3.50
Entelea arborescens	1L	\$3.50
Ficus pumila	2L	\$9.50
Fuchsia exorticata	1L	\$4.95
Fuchsia procumbens	1L	\$5.50
Geniostoma rupestre	1L	\$3.95
Griselinia littoralis (Broadway Mint)	5L	\$14.50
Griselinia littoralis (Broadway Mint)	10L	\$22.50
Hebe diosmifolia	1L	\$5.50
Hebe diosmifolia	2L	\$6.95
Hebe speciosa Blue	1L	\$3.50
Hebe topiara	2L	\$6.95
Hebe Wiri Mist	1L	\$5.95

DESCRIPTION	GRADE	PRICE
Hedycarya arborea	1L	\$7.50
Hemerocallis Red Wonder	2L	\$7.95
Hemerocallis Stella Bella (Yellow)	1L	\$5.50
Hoheria angustifolia	1L	\$3.95
Hoheria populnea	1L	\$3.95
Isolepis/finicia nodosa	0.5L	\$2.10
Isolepis/finicia nodosa	1L	\$3.15
Juncus gregiflorus/ edgarii	0.5L	\$2.10
Juncus maritimus/ krausii	0.5L	\$2.10
Juncus pallidus	1L	\$3.15
Juncus sarophorus	0.5L	\$2.10
Knightia excelsa	1L	\$4.85
Kunzea ericoides/robusta	50C	\$1.50
Kunzea ericoides/robusta	0.5L	\$2.10
Kunzea ericoides/robusta	1.5L	\$3.95
Leptospermum scoparium	50C	\$1.50
Leptospermum scoparium	28C	\$2.10
Leptospermum scoparium	0.5L	\$2.10
Leptospermum scoparium	1L	\$3.15
Leptospermum scoparium	1.5L	\$3.95
Libertia Cranwallii	1L	\$5.50
Libertia ixiooides	1L	\$5.50
Libertia perigrinans	1L	\$6.50
Liriope munroe white	1L	\$6.95
Lomandra katrinus deluxe	2L	\$6.95
Lomandra Tanika	1L	\$5.50
Lomandra Tanika	2L	\$7.50
Machaerina sinclairii	1L	\$3.95
Macropiper excelsum	1L	\$4.50
Melicope ternata	1L	\$4.85
Metrosideros carminea	2L	\$6.95
Michelia figo	2L	\$8.50
Myrsine australis	1L	\$7.50
Myrsine divaricata	1L	\$5.50
Nandina pygmaea Firepower	2L	\$6.95
Olearia paniculata	1L	\$3.95

Contact us today to place your order!

## Trade List

DESCRIPTION	GRADE	PRICE
Olearia solandri	1L	\$3.95
Olearia virgata	1.5L	\$3.95
Passiflora tetradra	1L	\$3.95
Phormium cookianum	1L	\$3.15
Phormium cookianum	1.5L	\$3.95
Phormium Dark Delight	2L	\$6.95
Phormium Evening Glow	2L	\$6.95
Phormium Green Dwarf	0.5L	\$2.95
Phormium Green Dwarf	1L	\$3.95
Phormium Green Dwarf	1.5L	\$4.50
Phormium Jack Spratt	1L	\$5.50
Phormium Jack Spratt	2L	\$6.95
Phormium Platts Black	2L	\$6.95
Phormium Rainbow Red	2L	\$6.95
Phormium Surfer	1L	\$5.95
Phormium Surfer	2L	\$6.95
Phormium tenax	0.5L	\$2.10
Phormium tenax	1L	\$3.15
Phormium tenax	1.5L	\$3.95
Pittosporum crassifolium	1L	\$4.85
Pittosporum eugenioides	1L	\$4.85
Pittosporum tenuifolium	1L	\$4.85

DESCRIPTION	GRADE	PRICE
Poa cita	0.5L	\$2.95
Poa cita	1L	\$3.95
Pomaderris kumaraho	1L	\$4.50
Pratia/ Lobelia angulata	2L	\$6.50
Prunus lusitanicas	2L	\$6.50
Pseudopanax laetus	1.5L	\$5.50
Pseudopanax lessonii	1L	\$3.95
Rhopalostylis sapida (Nikau Palm)	1L	\$7.50
Rhopalostylis sapida (Nikau Palm)	2L	\$7.95
Rose flower carpet white	2L	\$9.95
Rosmarinus Lockwood de Forest	2L	\$6.95
Schefflera digitata	1L	\$3.95
Schoenoplectus validus/tabernaemontani	0.5L	\$2.10
Schoenoplectus validus/tabernaemontani	1L	\$3.15
Selliera radicans	2L	\$6.95
Solanum aviculare	1L	\$3.95
Sophora godleyii	1L	\$4.85
Sophora microphyla	1L	\$7.50
Streblus Banksii	1L	\$4.85
Teucrium fruticans	2L	\$6.95
Trachelospermum jasminodes	1L	\$5.50
Typha orientalis	0.5L	\$2.95
Typha orientalis	1L	\$3.50
Zephranthe Candida	0.5L	\$2.95





# Plant Manuka. Lots more Manuka.

In 1969 at the Te Rapa Racecourse, the first New Zealand agricultural Fieldays kicked off an annual event. The first Fieldays event was attended by about 10,000 people. It was a success from the very first event and Mystery Creek has evolved into one of the most successful agricultural events in the Southern Hemisphere today.

by Terry Wearmouth

Stand F47 was the site that Kauri Park occupied for the 50th Fieldays exhibition last month, demonstrating our wide selection of Manuka and showcasing the option of Manuka forestry. The slightly ironic aspect about this Manuka story is that if we told landowners in 1969 that there would be an economic benefit in planting their hillsides in Manuka, we would have almost ended up before a magistrate.

The Kauri Park story at the Fieldays had quite a simple narrative. "Plant Manuka, lots more Manuka".



Today, the demand for Manuka honey far outstrips the availability of nectar flow and this will remain the case for several years if we are going to progress at current forestation rates.

The obvious best way forward for beekeepers is to secure large blocks of Manuka forest without the risk of over population of hives and the longest nectar flow possible. Beekeepers plus new Manuka forests is what we were seeking to bring together at the Fieldays.

Kauri Park displayed our range of superior DHA selections from the Far North and Northland which flower October – December and from the Taranaki and Central North Island which flower January - February.

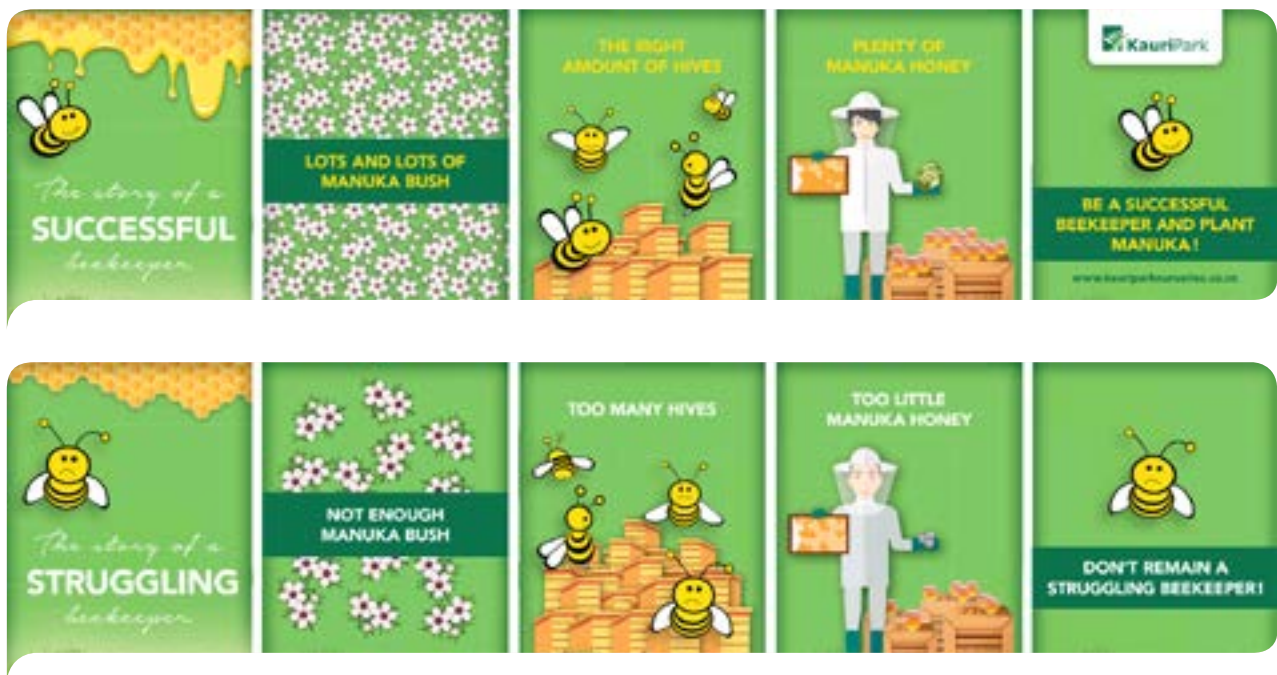
**The stand had a good amount of foot traffic and hundreds of people enquiring as to the possibilities of the Manuka industry.**

Existing customers and familiar faces visited our stand. Some came to say hello and swap their stories ...others to add to their Manuka forests...a few sent their staff to see us. There were new people coming to us which is always exciting and shows the momentum in the industry. Beekeepers weren't abundant as the landowners but a few visited the stand. Even the well-known folk of this country who are not in the Manuka trade called in for a chat as they know the positive benefits of Manuka and want to know that it is still a progressive industry.

The Fieldays brings rural NZ out of the far away valleys and into a common ground. Without fail, we always learn something new about the benefits of Manuka. This year was no different. A Waikato farming couple told us of their long history with Manuka and the medicinal properties that it has with sheep. This farmer used Manuka for facial eczema in the most extraordinary simple way. He would cut branches off the oily leaved manuka plants and put them in the water troughs, replacing them every 10 days. His neighbours would be drenching and losing stock in high percentages while his flock remained healthy and strong. He even reversed very bad cases of eczema with some of his Manuka oil potions drenched orally.

A common theme from a number of landowners is how to protect their waterways. Farmers are very concerned about leaving their legacy in a better condition than when they started using the land. Enhancing waterways with plantings is an obvious place to start improving water quality. There is a need for more science on this topic but the beneficial properties that Manuka has for improving waterways is amazing. The removal of nitrates and the reduction in fecal coliforms as water travels through Manuka planting are two key areas of interest.

One landowner is going to plant extra wide swaths of land either side of his waterways in primarily Manuka. His theory is that he will provide more than enough waterway protection, shelter for animals from wind and nectar for bees. All these point to a better farming operation.





It is possibly a topical subject right now with all of the East Cape and Tasman flooding making the news footage recently. Many people expressed concern about the cut over pine being washed into our rivers and causing serious damage and pollution. There is a number of factors as to why this has happened but it has caused more people to think about native forestry in these difficult areas to practice silviculture and harvesting.

After our busy week exhibiting at Mystery Creek, we are now following up enquiries. New Zealanders have bought new machinery. Fencing professionals have honed their skills. Tractors have pulled heavy stuff. Agricultural NZ has improved.





[kauriparknurseries.co.nz](http://kauriparknurseries.co.nz)



**0800 125 287**



**Kauri Park  
Nurseries Ltd**

**North Auckland Branch**

**Ph:** +64 9 431 2125

**Fax:** +64 9 431 2894

SH1 Kaiwaka, Northland

**Palmerston North Branch**

**Ph:** +64 6 357 4532

**Fax:** +64 6 357 4523

160 Napier Road

Palmerston North